

PANORAMA 2

LOT 1
3 VILLAS



71 690 277



26 716 000



capitalimmo@planet.tn

CAPITAL IMMO

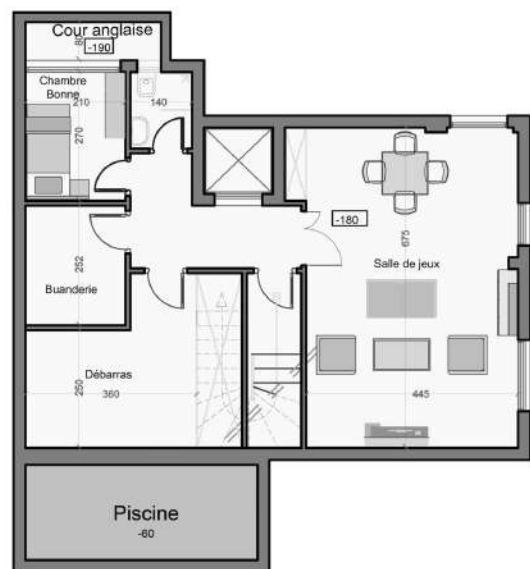
Avenue du Maghreb Arabe - Résidence Nesrine - Immeuble 61, Bureau 64, La Soukra

CAPITAL
immo

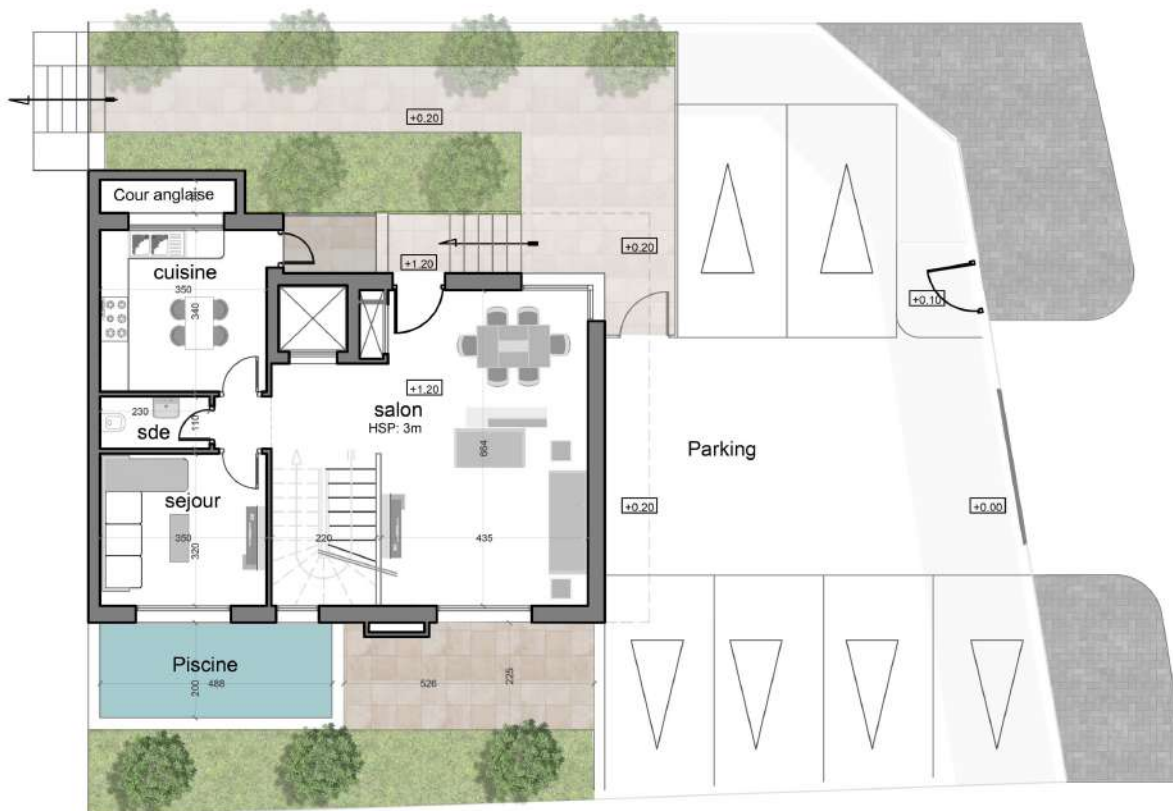
SITUATION DU PROJET



Villa 1

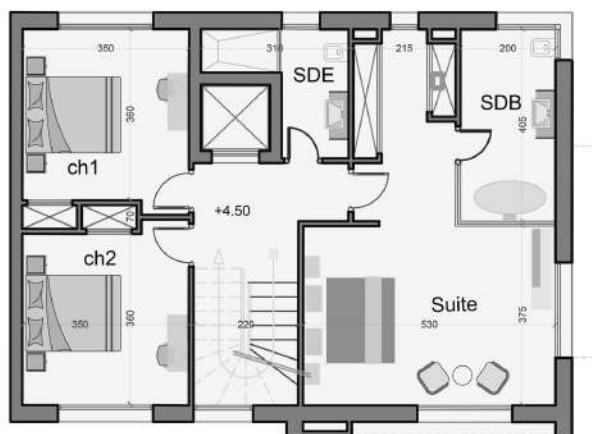


PLAN SOUS SOL

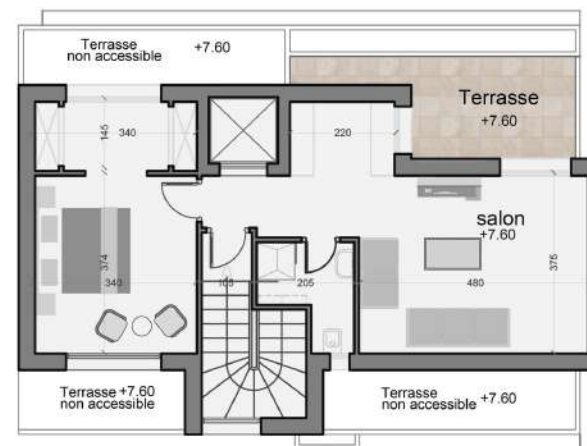


PLAN RDC

Villa 1



PLAN 1ER ETAGE

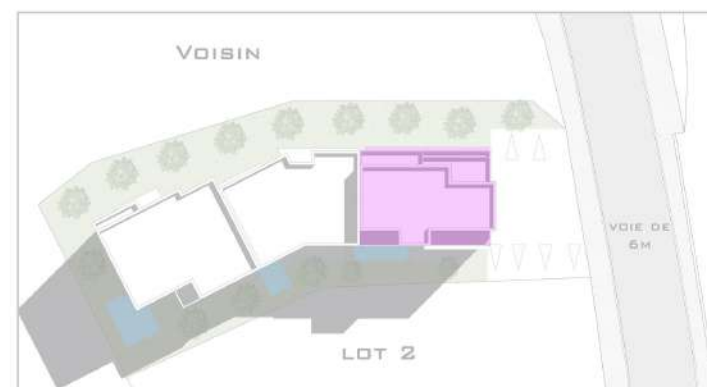


PLAN 2EME ETAGE

TABLEAU DE SURFACES

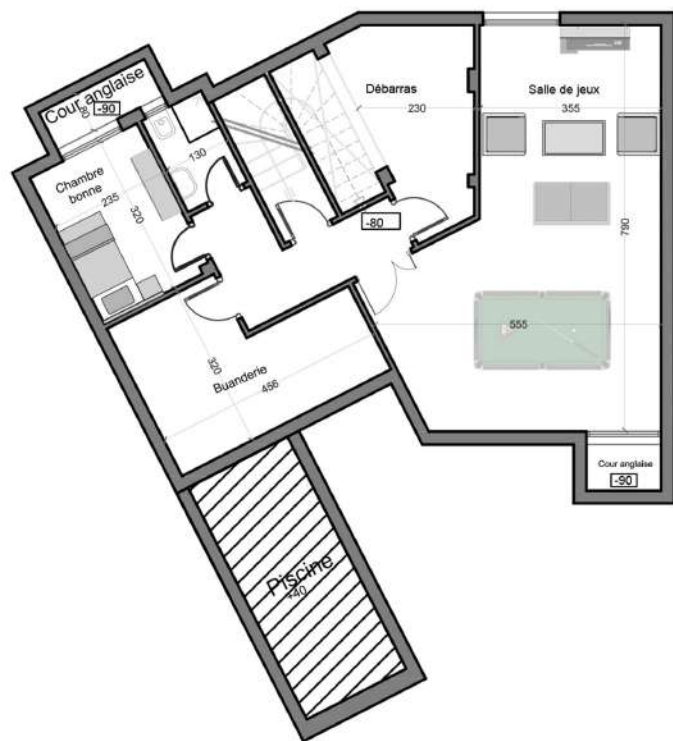
Villa 1	Sous sol	RDC	1er Etage	2ème Etage	Surface Totale Couverte
Surface H.O	86,47 m ²	101,51 m ²	105,48 m ²	71,33 m ²	364,79 m ²

Surface Jardin 42,30 m²
 Surface Totale du lot 143,81 m²

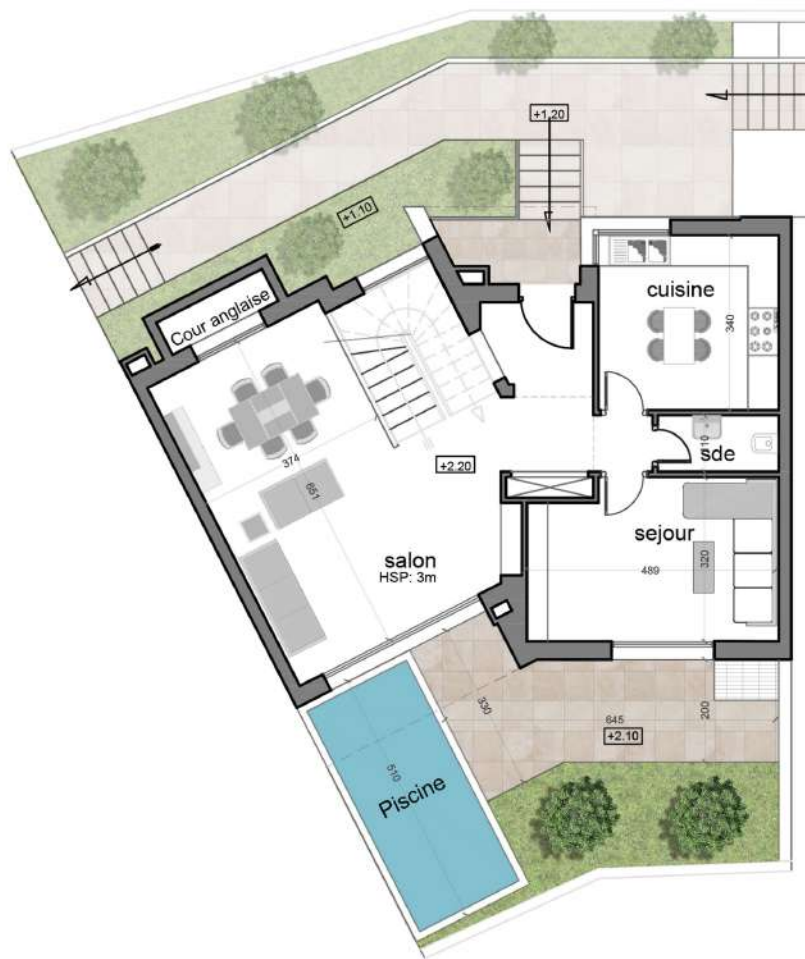


PLAN DE REPERAGE

Villa 2

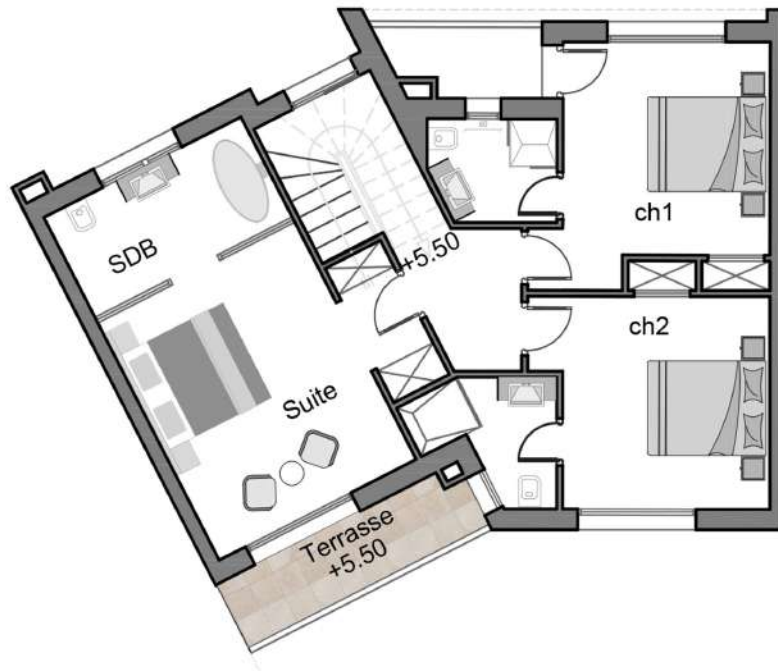


PLAN SOUS SOL



PLAN RDC

Villa 2



PLAN IER ETAGE

TABLEAU DE SURFACES

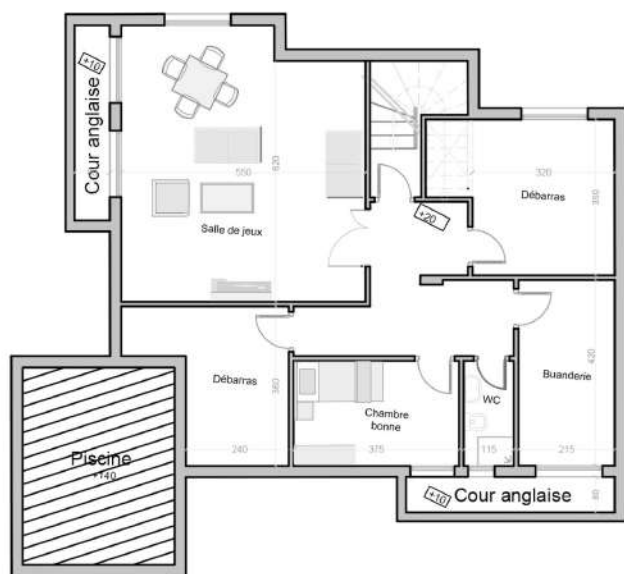
Villa 2	Sous sol	RDC	1er Etage	Surface Totale Couverte
Surface H.O	89,92 m ²	99,32 m ²	94,59 m ²	283,83 m ²

Surface Totale du lot 135,12 m²
Surface Jardin 35,80 m²

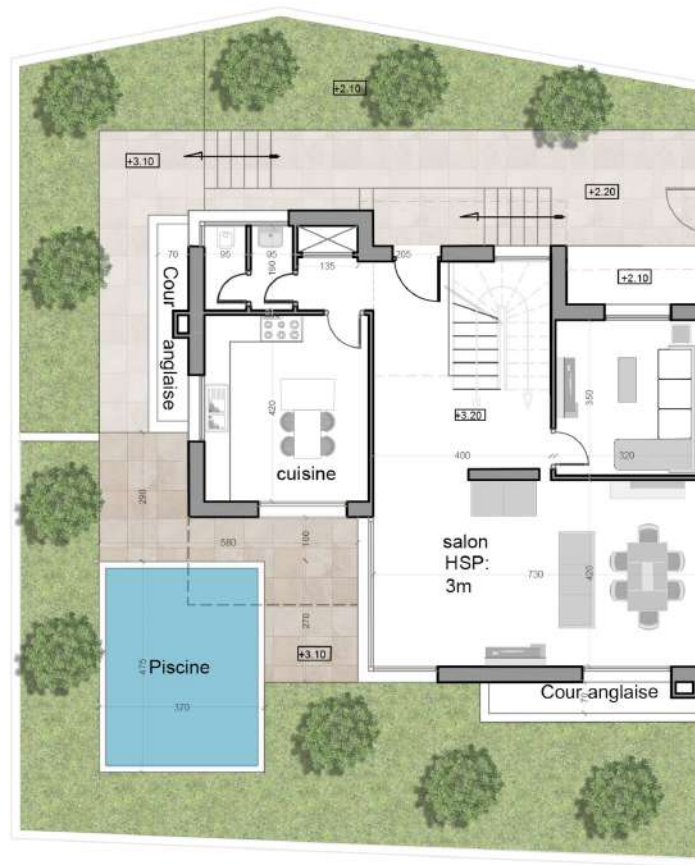


PLAN DE REPERAGE

Villa 3



PLAN SOUS SOL



PLAN RDC

Villa 3



PLAN 1ER ETAGE

TABEAU DE SURFACES

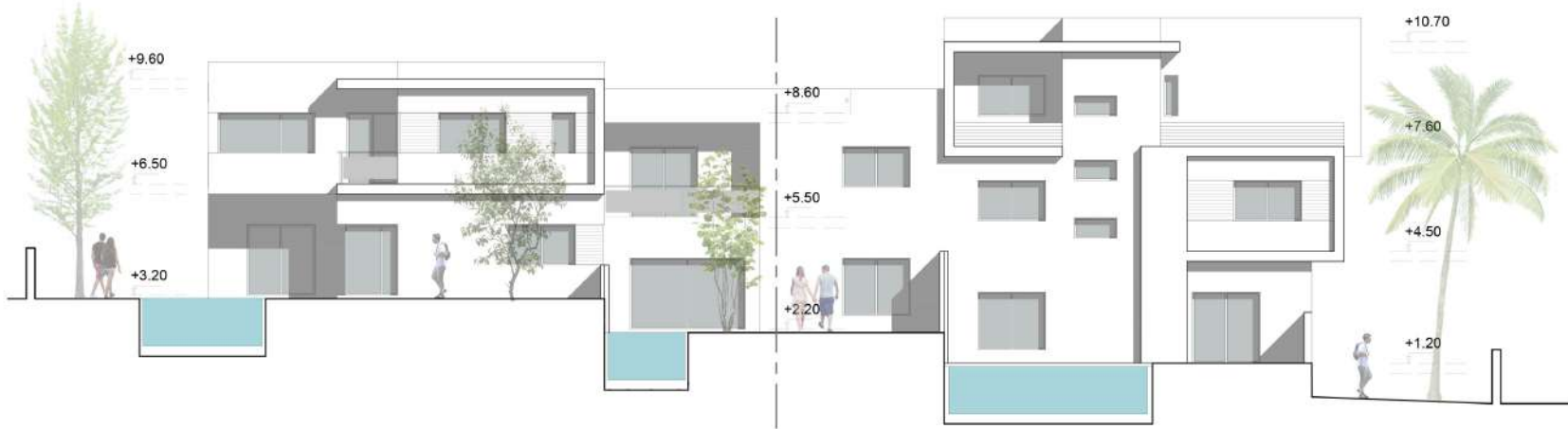
Villa 3	Sous sol	RDC	1er Etage	Surface Totale Couverte
Surface H.O	106,82 m ²	114,32 m ²	109,32 m ²	330,46 m ²

Surface Totale du lot 286,93 m²
Surface Jardin 172,61 m²



PLAN DE REPERAGE

FACADES



FACADE SUD-EST



FACADE NORD-OUEST